



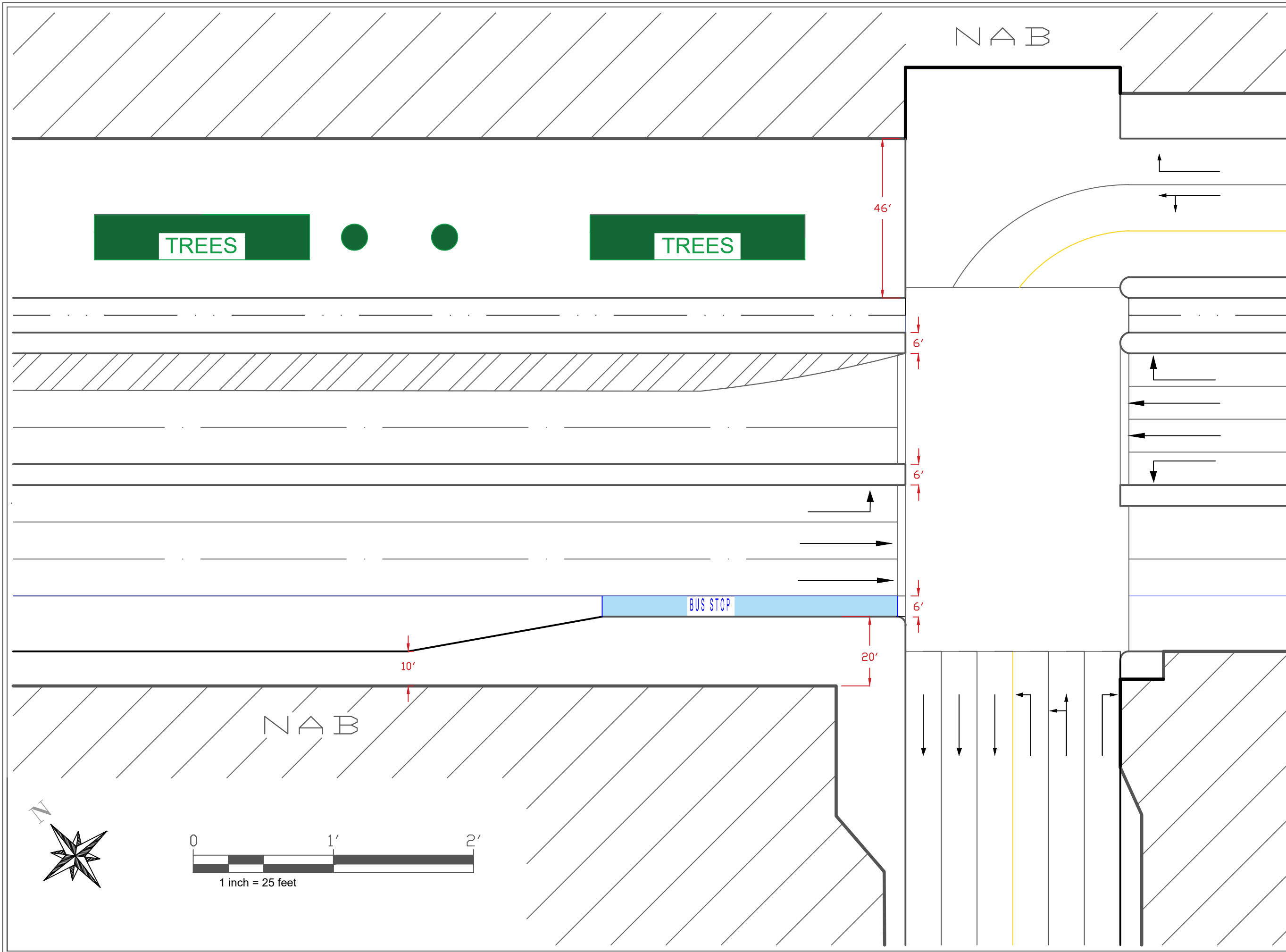
Coronado NAB Pedestrian Tunnel

Coronado NAB Pedestrian Tunnel

<u>SHEET INDEX</u>	
EXISTING CONDITIONS	1
TUNNEL LAYOUT	2
DEMOLITION PLAN	3
TUNNEL PROFILE/SECTION	4
STRUCTURAL DETAILS	5
GRADING PLAN	6
GRADING PLAN CONT.	7



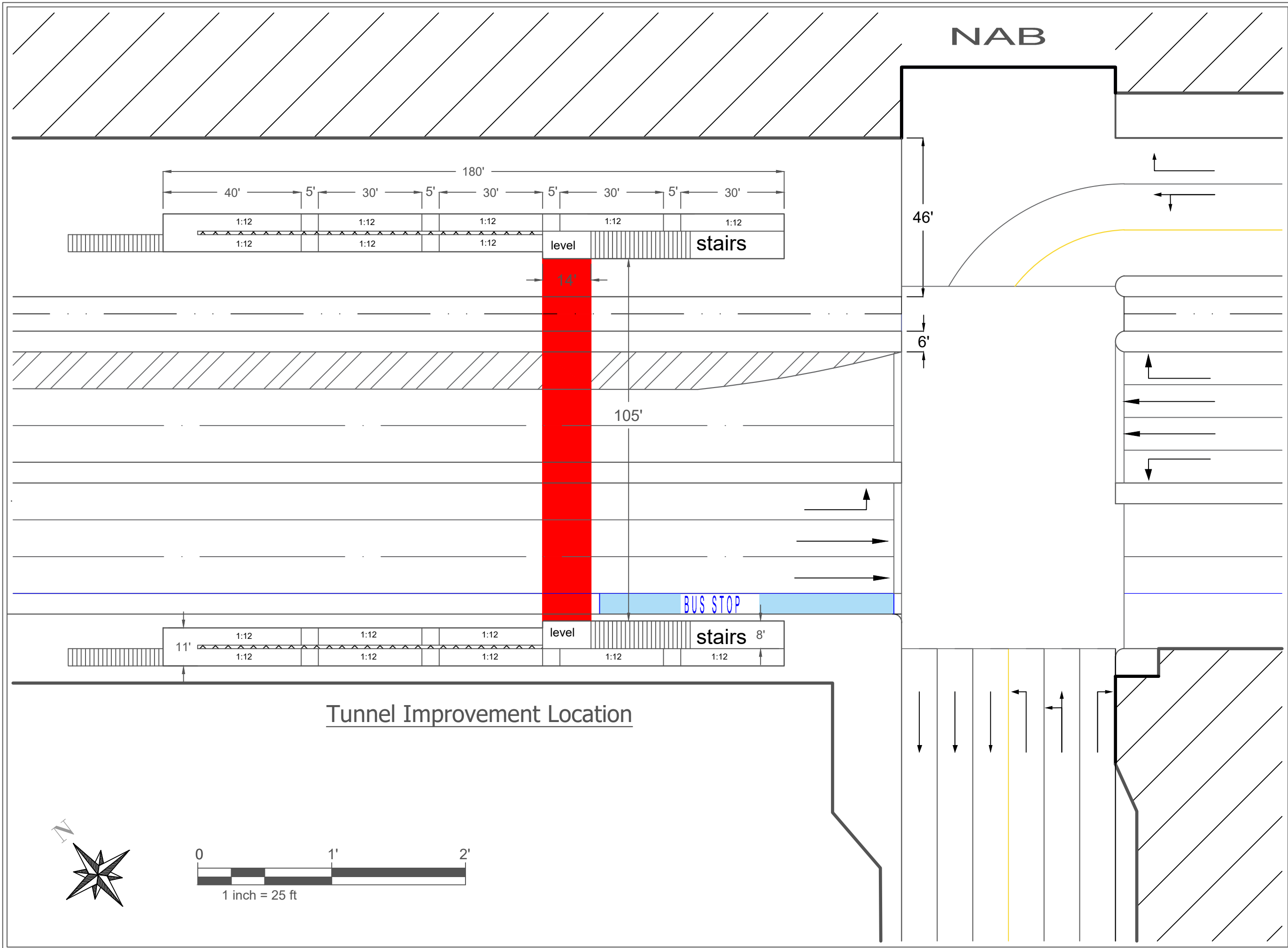
TITLE SHEET



Coronado NAB Pedestrian Tunnel



Existing Site Condition

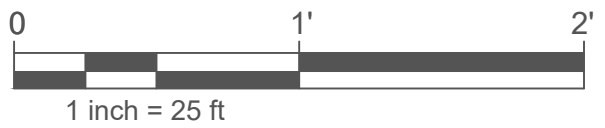
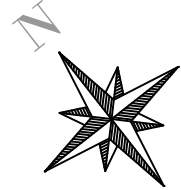


Coronado NAB Pedestrian Tunnel



Tunnel Location

Sheet 2 of 7



NAB

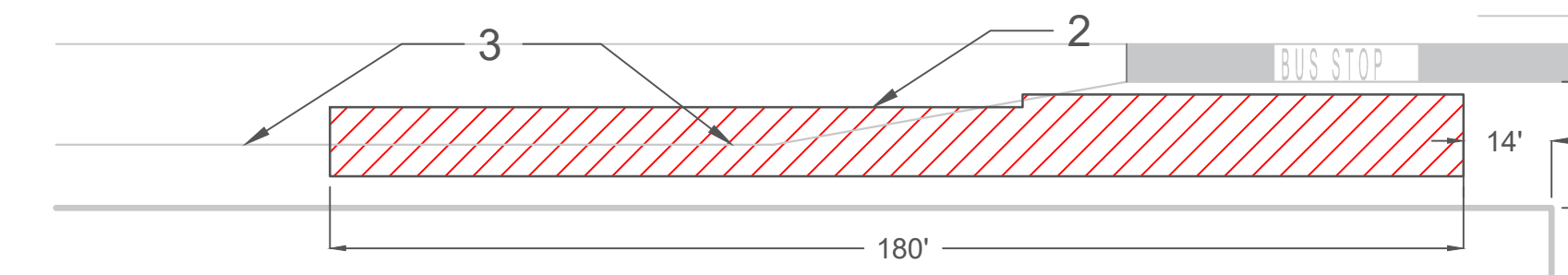
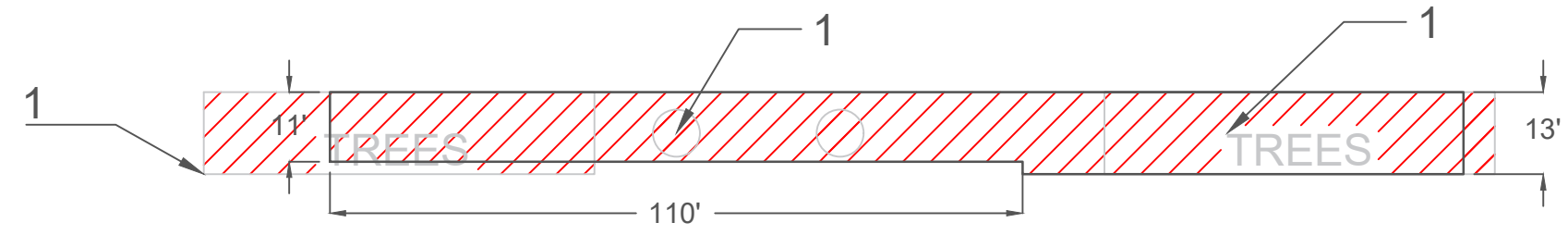


Coronado NAB Pedestrian Tunnel



Demolition Plan

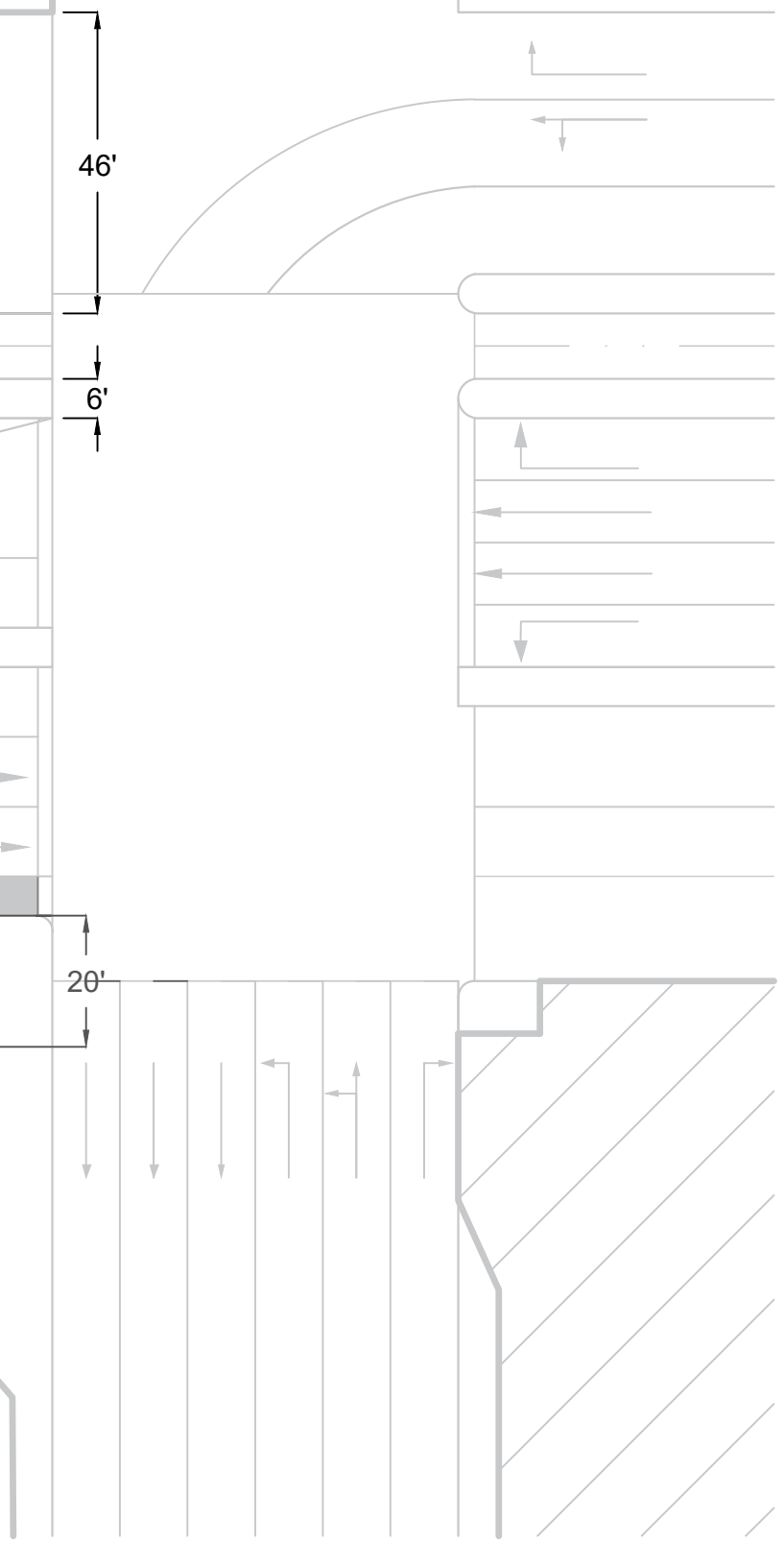
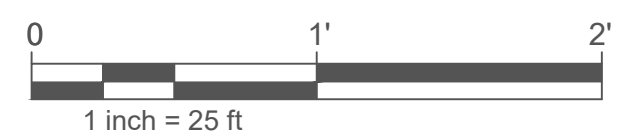
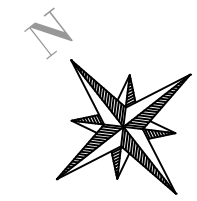
Sheet 3 of 7



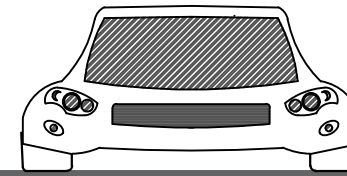
- Demolition Notes**
- 1. Demolish existing Trees.
 - 2. Demolish existing part of bus lane.
 - 3. Demolish part of the curb.

LEGEND

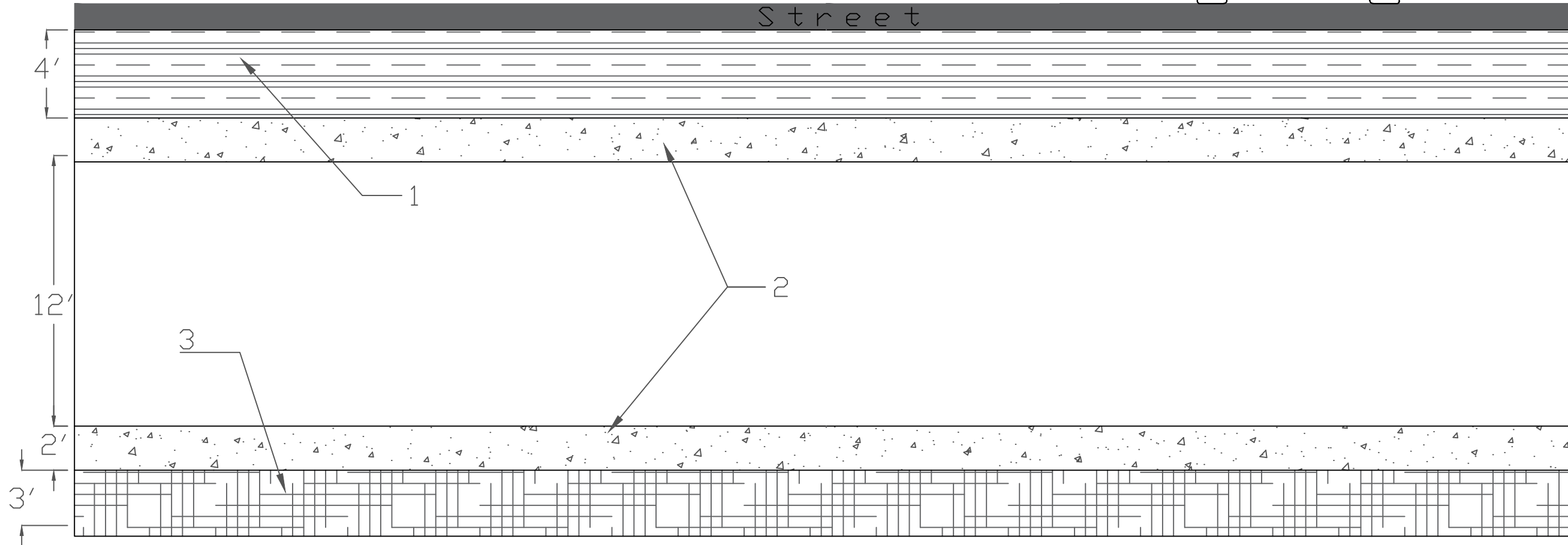
- To be demolished
- # Demolition Mark



Tunnel Side Section



Street



Materials:

- 1. Silty Sand : 4'
- 2. Concrete : 2x2' ; f'c = 4,000 psi
- 3. Foundation : 3'

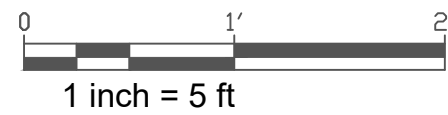
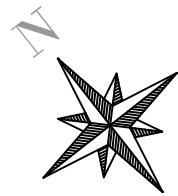


Coronado NAB Pedestrian Tunnel

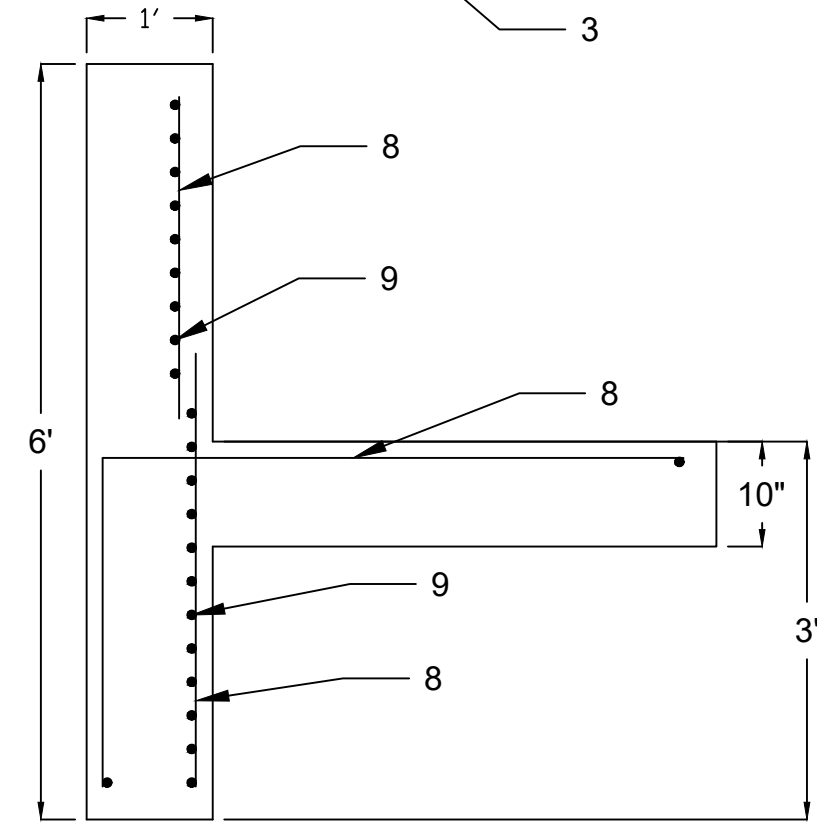
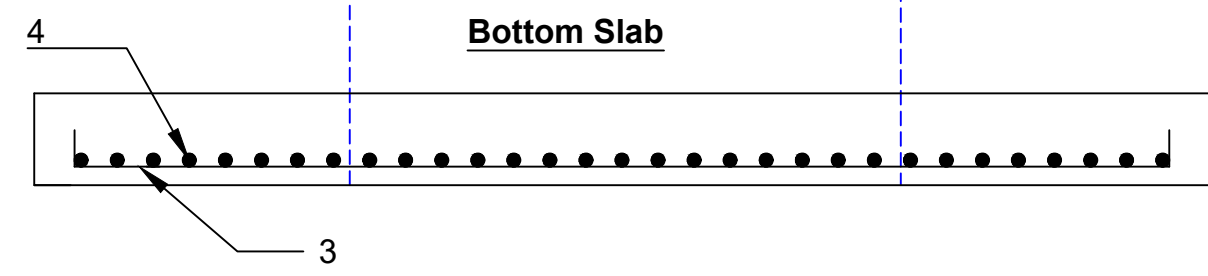
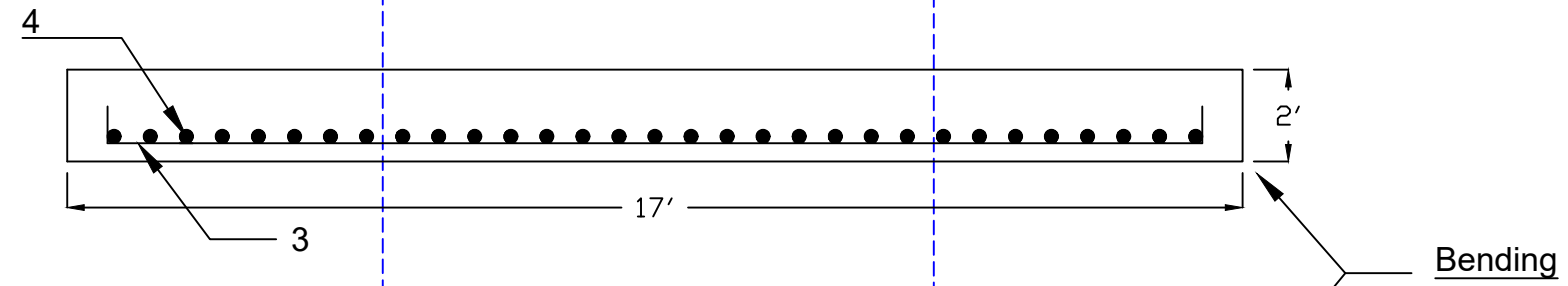
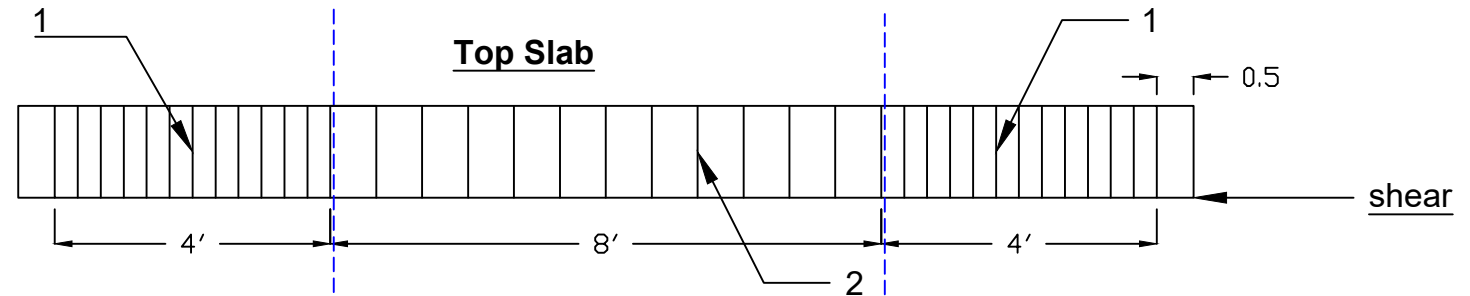
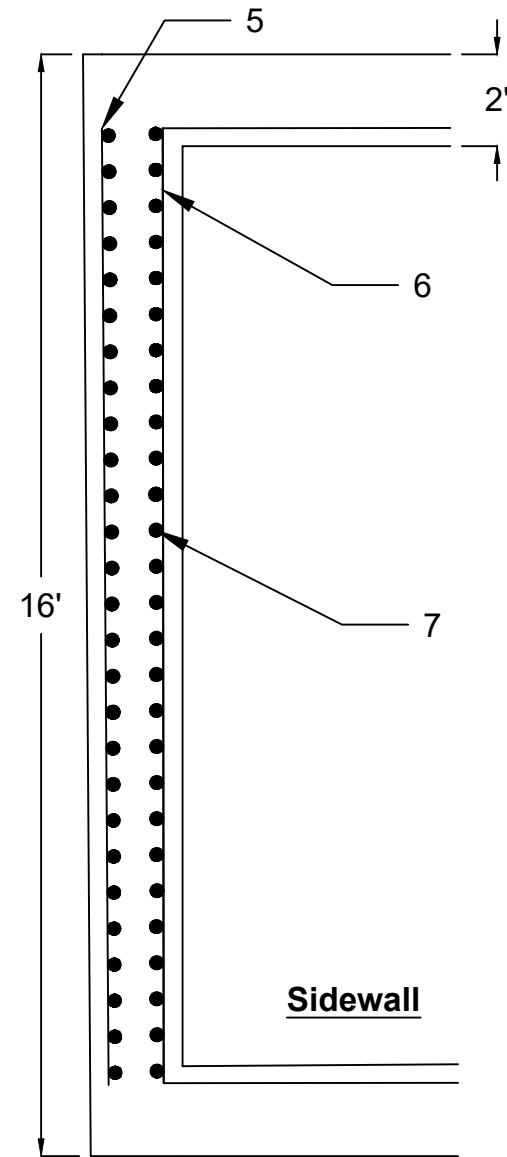
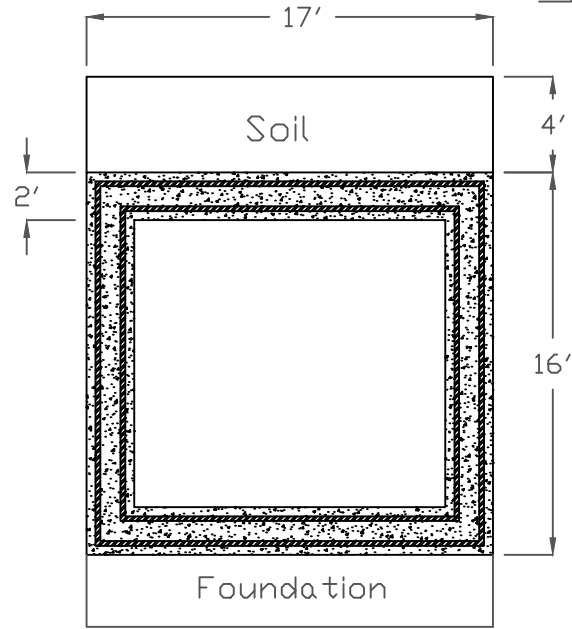


Typical Detail

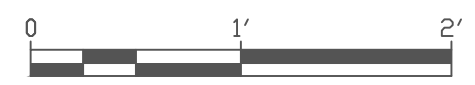
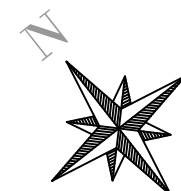
Sheet 4 of 7



Typical Tunnel Section



#	Bar Size	Spacing
1	#4	0'-4"
2	#4	0'-8"
3	#5	0'-8"
4	#10	0'-4"
5	#6	1'-0"
6	#7	0'-6"
7	#6	1'-0"
8	#6	1'-0"
9	#5	1'-0"

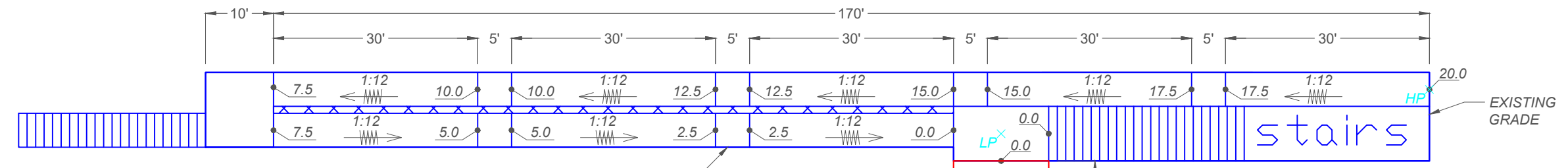
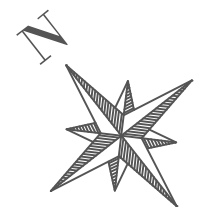


Coronado NAB Pedestrian Tunnel



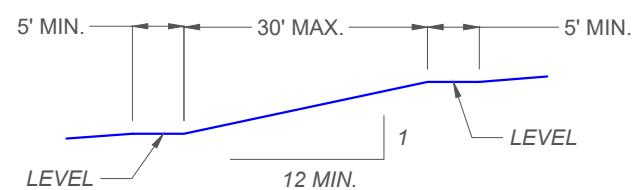
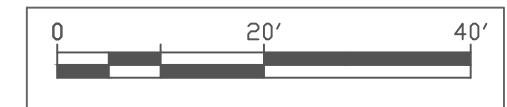
Structural Plan

Sheet 5 of 7

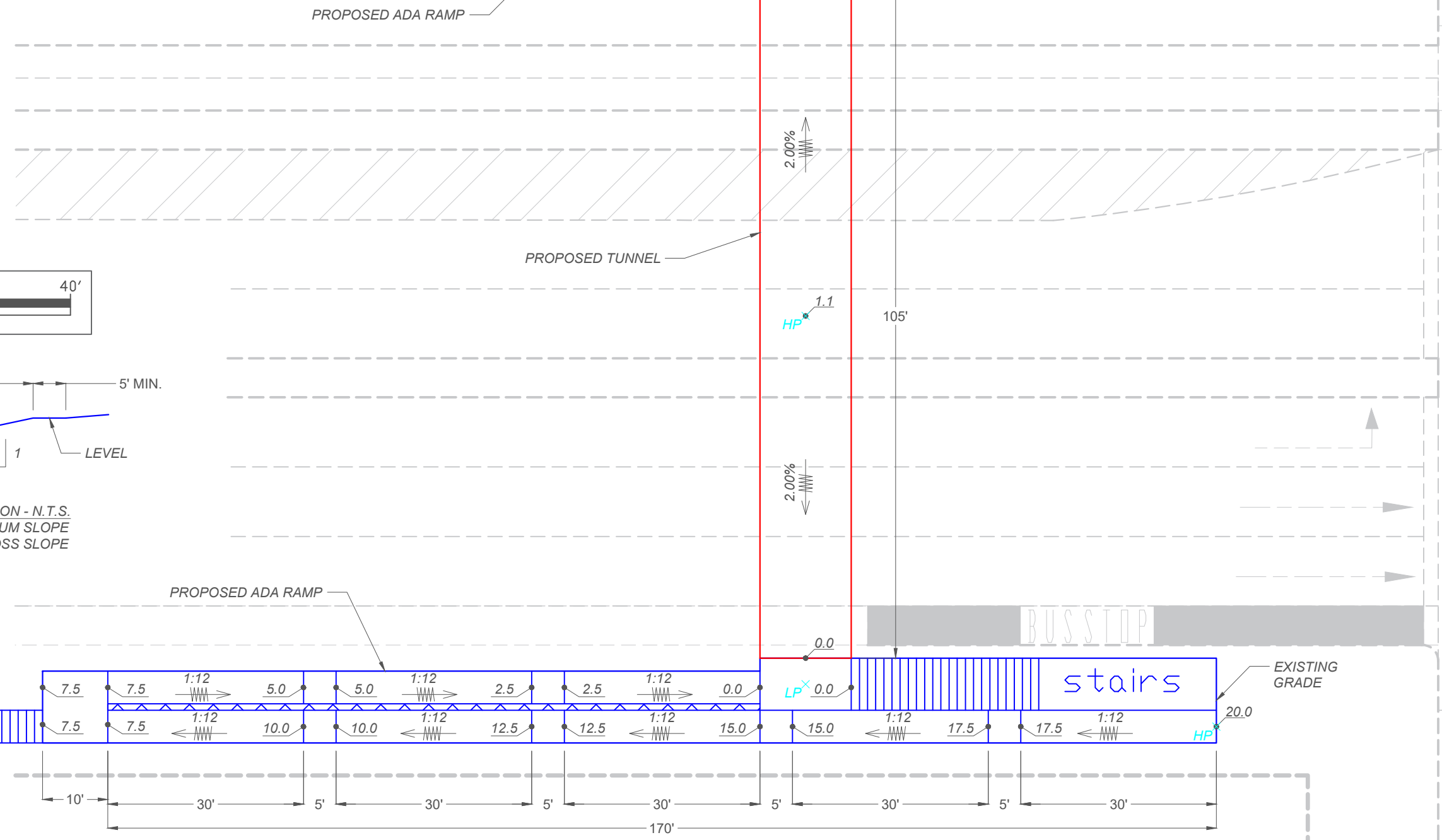


LEGEND

- HP^x HIGH POINT
- LP^x LOW POINT
- 0.0 SPOT GRADE
- 0.00% SLOPE
- Direction arrow DIRECTION
- - - EXISTING



TYPICAL ADA RAMP SECTION - N.T.S.
1:12 MAXIMUM SLOPE
1:48 MAXIMUM CROSS SLOPE



Coronado NAB Pedestrian Tunnel

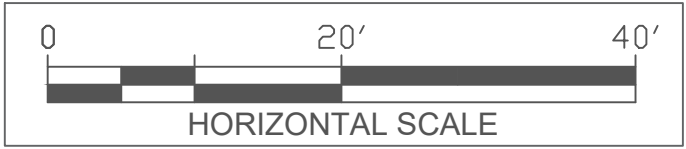
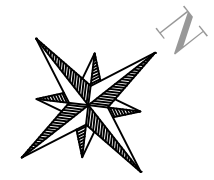
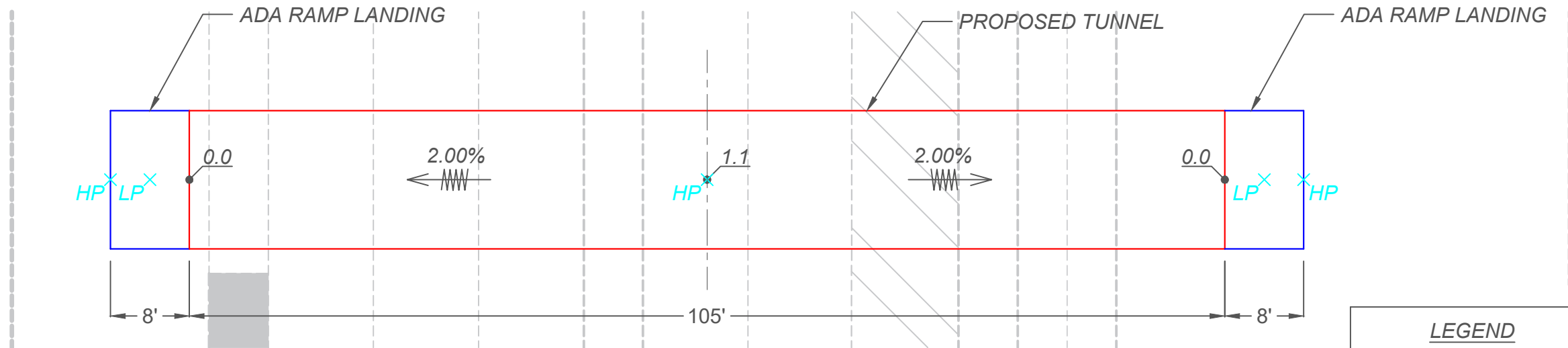


Grading Plan

PRODUCED BY AN AUTODESK STUDENT VERSION

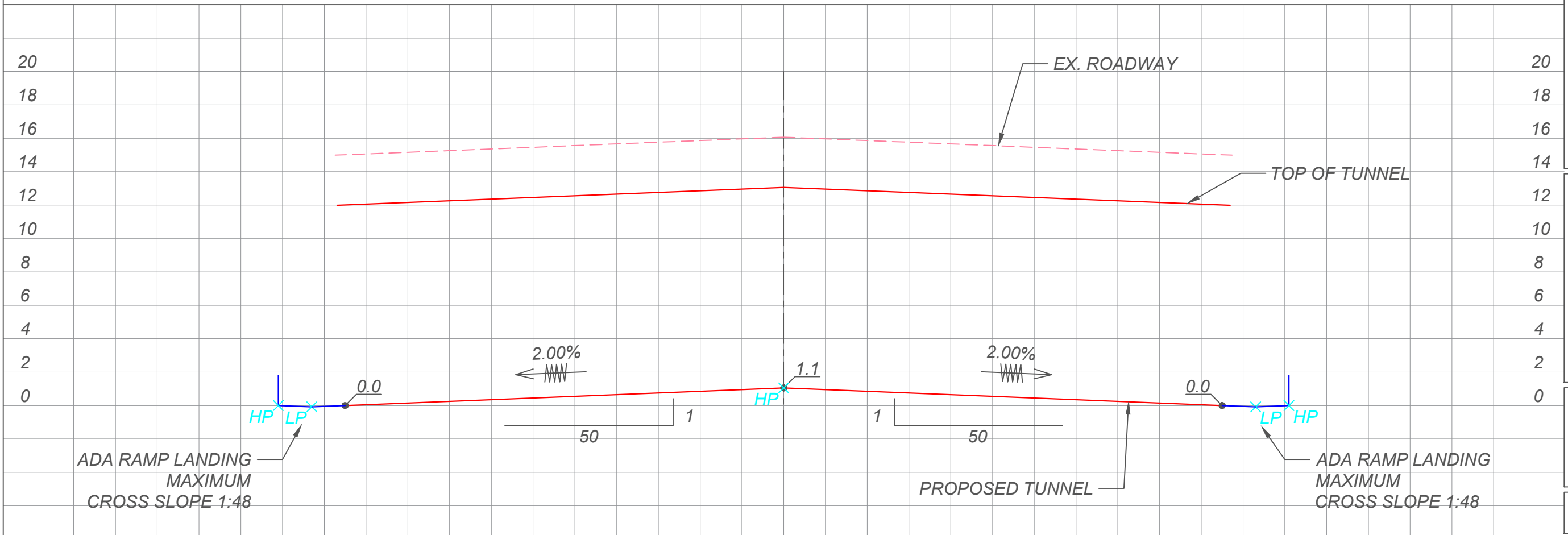
PRODUCED BY AN AUTODESK STUDENT VERSION

Tunnel Grading



LEGEND	
HP ^X	HIGH POINT
LP ^X	LOW POINT
0.0	SPOT GRADE
0.00%	SLOPE
Wavy line with arrow	DIRECTION

Tunnel Profile



Coronado NAB Pedestrian Tunnel



Grading & Profile Plan